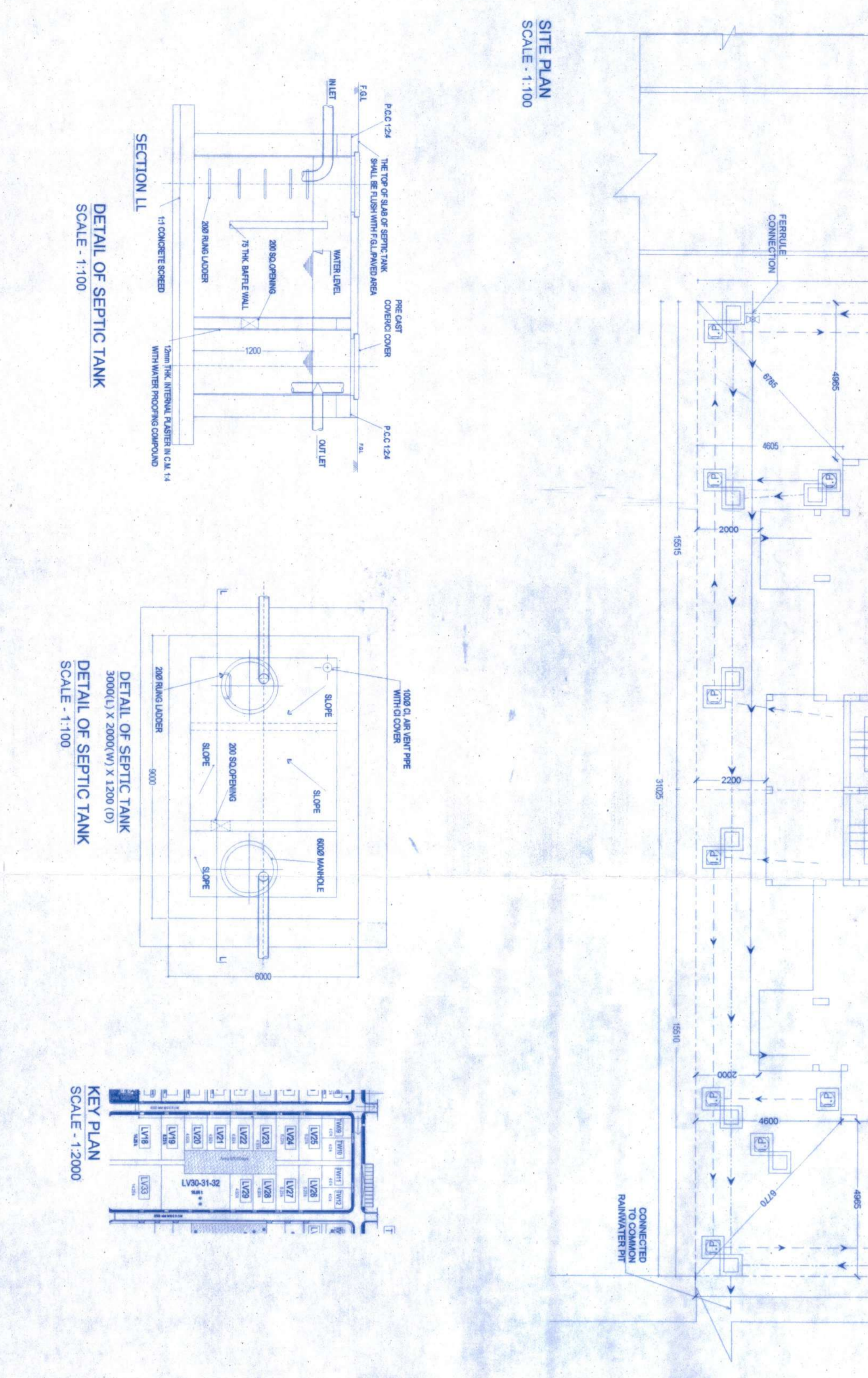
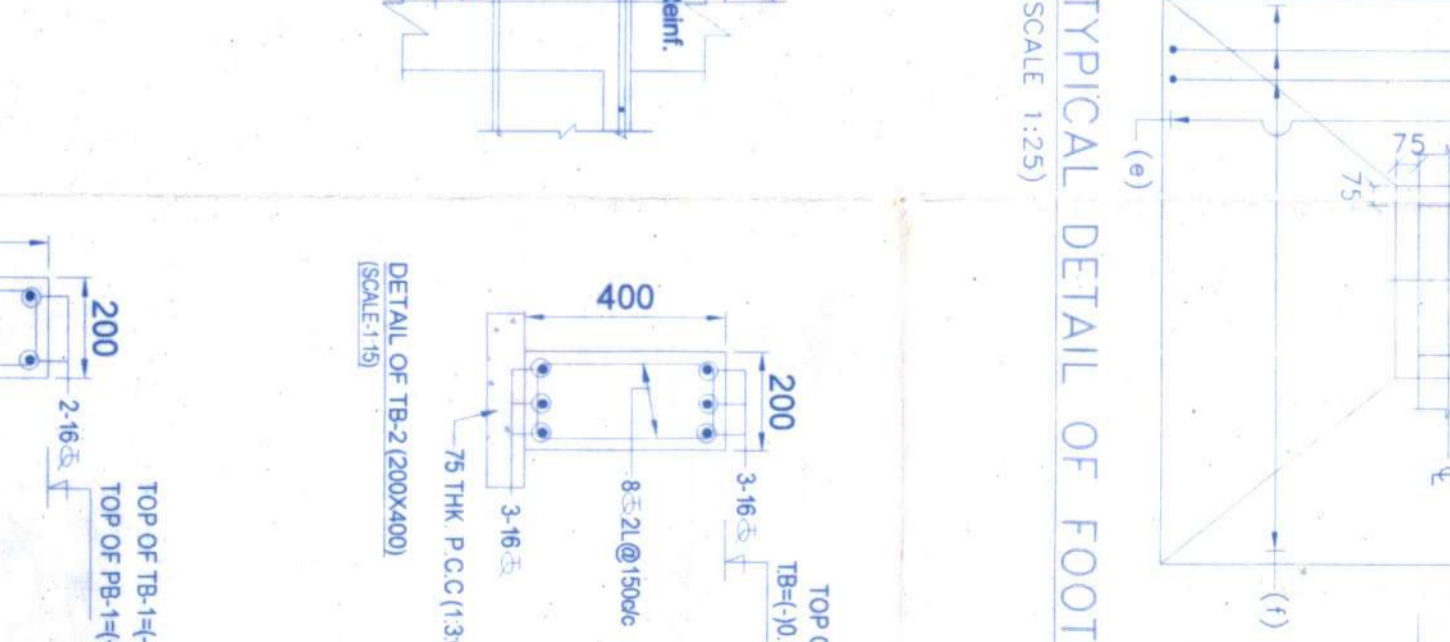
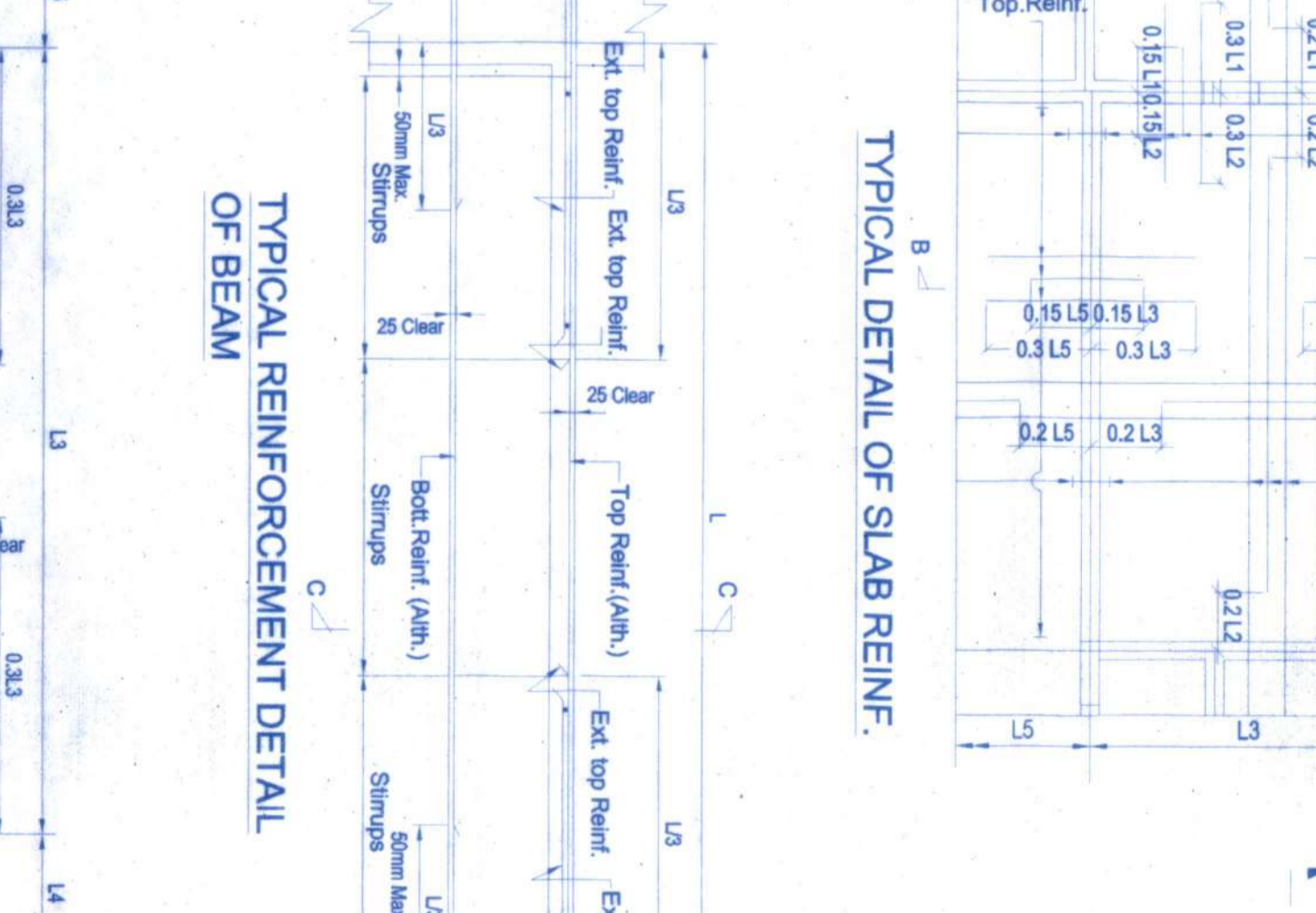


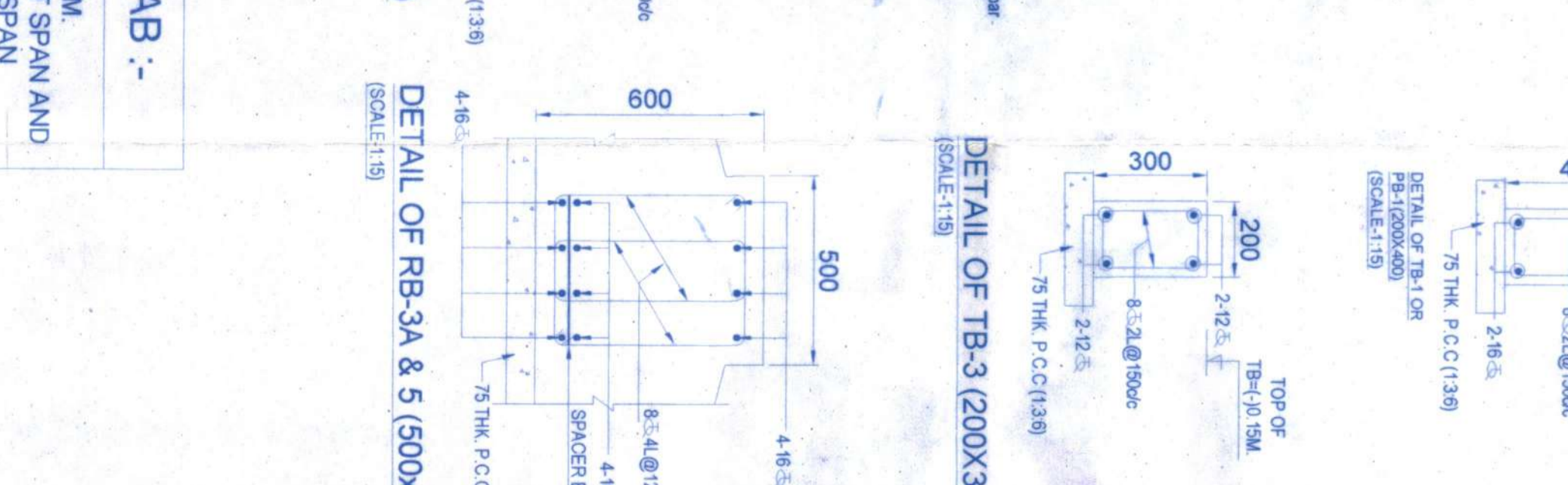
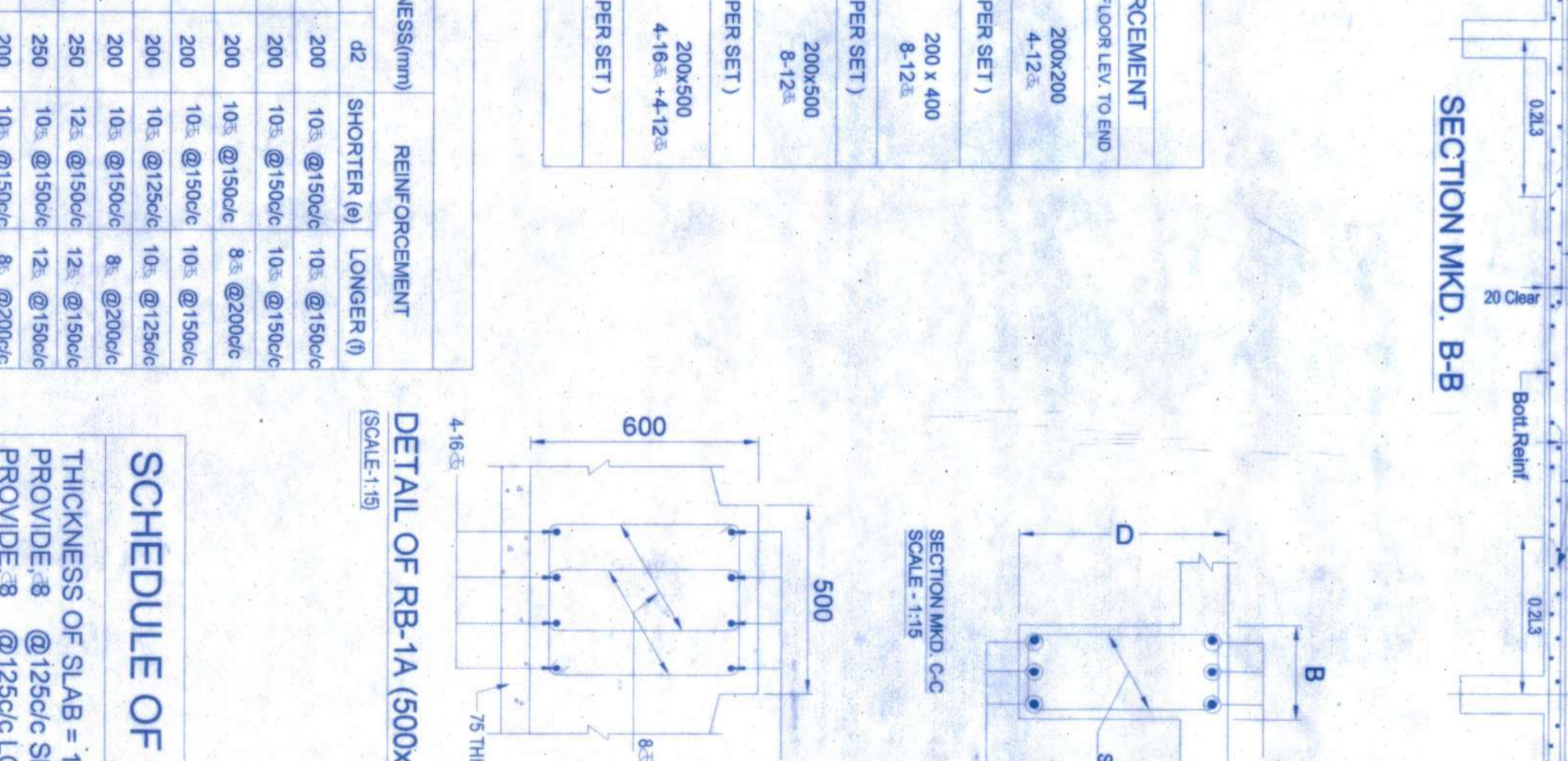
SL.NO	DOOR MARKED	OPENING	WIDTH	HEIGHT	SL. LITTLE	DESCRIPTION
1	D1	1800	2400	-	2400	DOUBLE SLUTTER
2	D2	1000	2400	-	2400	SINGLE SLUTTER FLUSH
3	D3	800	2400	-	2400	SINGLE SLUTTER FLUSH DOOR
4	D4	750	2100	-	2100	FIXED SLUTTER
5	D5	2100	2400	-	2400	SLIDING GLASS DOOR
6	D6	800	2000	2000	2000	GLASS DOOR
7	D7	900	2000	2000	2000	SINGLE SWING GLASS DOOR

SL.NO	WINDOW MARKED	OPENING	WIDTH	HEIGHT	SL. LITTLE	DESCRIPTION
1	W1	800	2200	500	2400	PAINTED TOP HUNG WINDOW
2	W2	800	2200	500	2400	PAINTED TOP HUNG WINDOW
3	W3	1000	2400	-	2400	FIXED WINDOW
4	W4	800	2000	800	2400	FIXED WINDOW
5	W5	800	2000	500	1100	FIXED WINDOW



COL. MMD	SIZE & REINFORCEMENT
AC1	200x200 @ 150c/c
AC2	200x200 @ 150c/c
AC3	200x200 @ 150c/c
AC4	200x200 @ 150c/c
AC5	200x200 @ 150c/c
AC6	200x200 @ 150c/c
AC7	200x200 @ 150c/c
AC8	200x200 @ 150c/c
AC9	200x200 @ 150c/c
AC10	200x200 @ 150c/c

MMD	UNDER COLS	THICKNESS(M)	REINFORCEMENT
FO	2.2.2.7	300	10 @ 150c/c
FO1	2.2.2.7	300	10 @ 150c/c
FO2	2.2.2.7	300	10 @ 150c/c
FO3	2.2.2.7	300	10 @ 150c/c
FO4	2.2.2.7	300	10 @ 150c/c
FO5	2.2.2.7	300	10 @ 150c/c
FO6	2.2.2.7	300	10 @ 150c/c
FO7	2.2.2.7	300	10 @ 150c/c
FO8	2.2.2.7	300	10 @ 150c/c
FO9	2.2.2.7	300	10 @ 150c/c
FO10	2.2.2.7	300	10 @ 150c/c



MMD	THICKNESS	REINFORCEMENT
SL1	125	10 @ 150c/c
SL2	125	10 @ 150c/c
SL3	125	10 @ 150c/c
SL4	125	10 @ 150c/c
SL5	125	10 @ 150c/c
SL6	125	10 @ 150c/c
SL7	125	10 @ 150c/c
SL8	125	10 @ 150c/c
SL9	125	10 @ 150c/c
SL10	125	10 @ 150c/c

THICKNESS OF SLAB - 125 MM
 PROVIDE 8 @ 125c/c SHORT SPAN AND
 PROVIDE 8 @ 125c/c LONG SPAN

- A. ARCHITECTURAL NOTES:**
1. ALL DIMENSIONS ARE IN MILLIMETERS UNLESS OTHERWISE SPECIFIED
 2. ALL EXTERNAL PLASTER ARE 18 MM THK AND INTERNAL PLASTER ARE 12 MM THK RESPECTIVELY
 3. ALL EXTERNAL WALLS ARE 200 THK & INTERNAL PARTITION WALLS ARE 100 THK UNLESS OTHERWISE MENTIONED
 4. ALL ELECTRICAL AND PLUMBING WORKS ARE CONSIDERED AS PER IS CODE

- B. STRUCTURAL NOTES:**
1. ALL DIMENSIONS ARE IN MM U.O.M
 2. DIMENSIONS TO FACE UNLESS NOTED OTHERWISE
 3. ALL DIMENSIONS TO FACE UNLESS NOTED OTHERWISE
 4. FOR COLUMN OF THE BEAM REFER ARCH. BLOCK LAYOUT PLAN
 5. ALL DIMENSIONS TO FACE UNLESS NOTED OTHERWISE
 6. BEARING CAPACITY OF SOIL - CONSIDERED AS 150 KN/M²
 7. CONCRETE - M25 (RESISTIVE U.O.M)
 8. STEEL - Fe 500
 9. CLEAR COVER TO REINFORCEMENT - 25 mm
 10. MIN. 4 TOP BEAM 50 mm
 11. MIN. 4 TOP BEAM 50 mm
 12. MIN. 4 TOP BEAM 50 mm
 13. MIN. 4 TOP BEAM 50 mm
 14. MIN. 4 TOP BEAM 50 mm
 15. MIN. 4 TOP BEAM 50 mm
 16. MIN. 4 TOP BEAM 50 mm
 17. MIN. 4 TOP BEAM 50 mm
 18. MIN. 4 TOP BEAM 50 mm
 19. MIN. 4 TOP BEAM 50 mm
 20. MIN. 4 TOP BEAM 50 mm

- C. AREA CALCULATION:**
1. PLOT AREA - 2005
 2. TMS - 27.56 SQM
 3. TMS - 27.56 SQM
 4. TMS - 27.56 SQM
 5. TMS - 27.56 SQM
 6. TMS - 27.56 SQM
 7. TMS - 27.56 SQM
 8. TMS - 27.56 SQM
 9. TMS - 27.56 SQM
 10. TMS - 27.56 SQM
 11. TMS - 27.56 SQM
 12. TMS - 27.56 SQM
 13. TMS - 27.56 SQM
 14. TMS - 27.56 SQM
 15. TMS - 27.56 SQM
 16. TMS - 27.56 SQM
 17. TMS - 27.56 SQM
 18. TMS - 27.56 SQM
 19. TMS - 27.56 SQM
 20. TMS - 27.56 SQM

D. SIGNATURE OF OWNER:

Approved by
 16/02/23

D. SIGNATURE OF ENGINEER:

Signature of Engineer
 16/02/23

G. PROJECT:

PROPOSED TYPICAL G-11 BUNGALOW FOR RESIDENTIAL COMPLEX AT PLOT NO TW14 & TW15 DAG NO - 1944, 1945
 MOUZA - RAJKRISHNAPUR P.S. - BISHNUPUR DIST. - SOUTH 24 PGS. WEST BENGAL

TITLE	DATE	SHEET NO.	REV.
SITE PLANS, KEY PLAN, FLOOR PLANS, ELEVATIONS AND SECTIONS, SEPTIC TANK DETAIL OF TWIN VILLA - PLOT NO TW14 & TW15	16/02/23	3	